

A graphic featuring a large, vibrant magenta square. Overlaid on this square is a grayscale image of two men in business attire. One man is in the foreground, leaning forward with his arms outstretched, while the other man stands behind him, also with arms outstretched. The background is a light gray.

ALOFT DUBAI AIRPORT OVERVIEW



ALOFT DUBAI AIRPORT OVERVIEW

Jump into a world of self expression in the heart of Dubai!

A social & vibrant scene awaits you at Aloft Dubai Airport. Located few minutes away from Dubai International Airport (DXB), this hip destination is all set to welcome you into the fun world of Aloft. Experience the up-beat lifestyle in the globe's most glamorous city, as our 4-star boutique hotel offers easy-breezy access to Dubai's famed commercial & popular local attractions like the Dubai Festival City, Dubai Mall, Burj Khalifa, the Gold Souk, La Mer & Bur Dubai.

Play, Work & Relax in the Aloft guestrooms featuring ultra-comfortable signature beds, walk-in showers, bath amenities by Bliss Spa & more. Don't let the fun stop there, At Aloft Dubai Airport it's as tuned in as the music and as cool as its urban vibes. Sip on crafted signature cocktails with great bites at the W XYZ bar. Looking for your favorite delicacies? Aloft Runway has the perfect culinary recipe for all your cravings. Re:Charge at the well-equipped fitness center or laze back in our outdoor infinity pool overlooking a picturesque skyline Dubai.

















ALOFT DUBAI AIRPORT

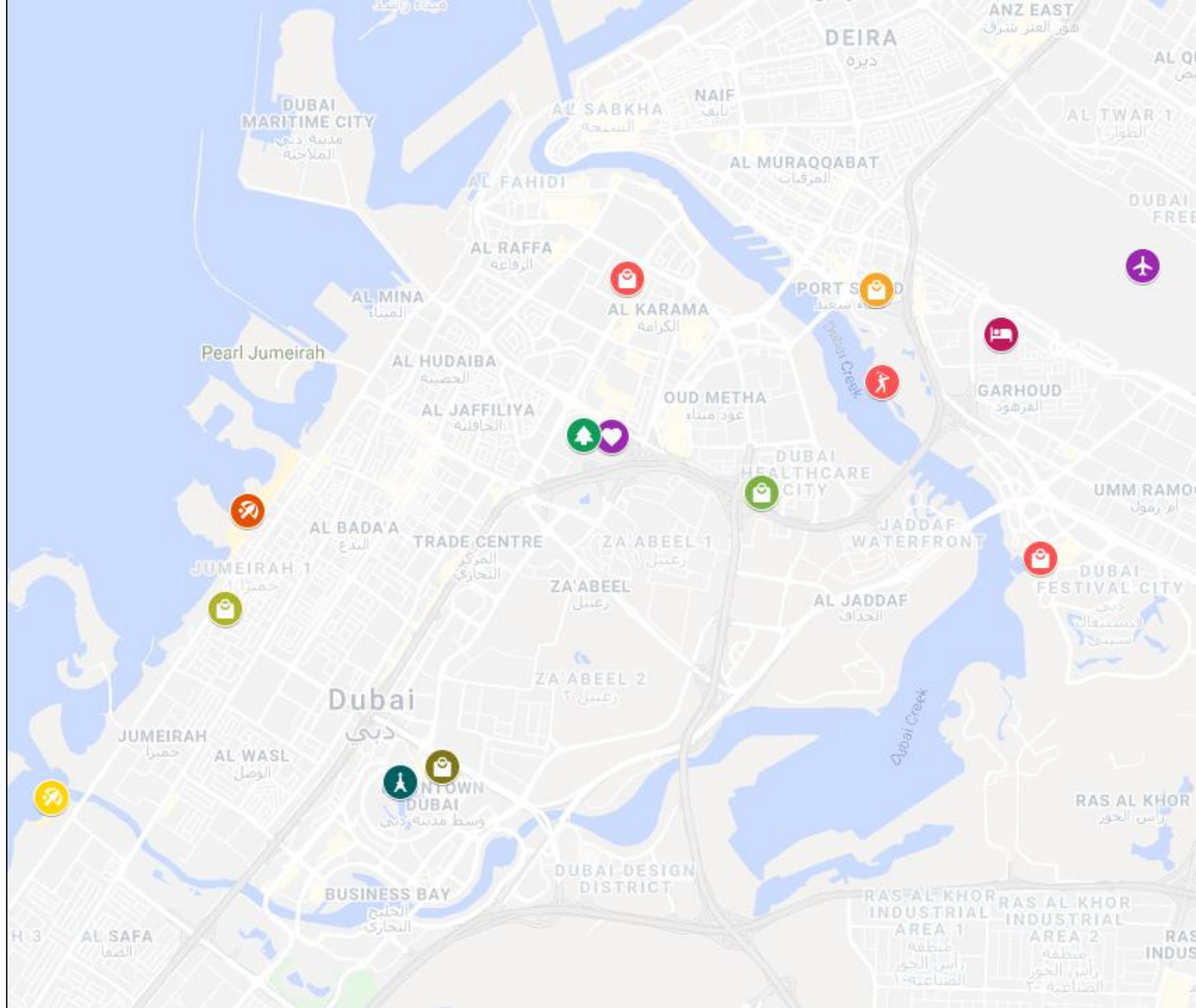
WHAT'S AROUND

ALOFT DUBAI AIRPORT

Interactive map – click on an icon

Distance & Approximate Travel Time from Hotel.

-  Aloft Dubai Airport
-  Dubai International Airport – 0.5 KM / Less than 5 minutes
-  Dubai Creek Golf & Yacht Club – 4.4 KM / 15 minutes
-  Deira City Centre – 2.3 KM / 6 minutes
-  Festival City Mall – 5.5 KM / 9 minutes
-  The Dubai Frame– 8.2 KM / 11 minutes
-  Zabeel Park – 8.2 KM / 10 minutes
-  La Mer Beach – 13.8 KM / 20 minutes
-  Mercato Mall –14.3 KM / 20 minutes
-  Dubai Mall –12.5 KM / 15 minutes
-  Burj Khalifa – 14 KM / 15 minutes
-  Jumeirah Beach – 18.2 KM / 17 minutes



KEY FEATURES & AMENITIES

ALOFT DUBAI AIRPORT

Features & Amenities-

- Located minutes from Dubai International Airport
- Located in close proximity to Dubai's famed attractions & districts
- 230 urban guestrooms & suites
- Large airy guestrooms
- Rooftop pool
- 24 hours fitness center
- 24 hours snacks dispenser
- Meeting rooms available
- Great views on Dubai
- All Day Dining restaurant available



DIFFERENT BY DESIGN

ALOFT GUESTROOMS & SUITES

The brand new Aloft Dubai Airport guestrooms are designed for travelers who love open space, open thinking & open expression. Experience our vibrant spaces that bring people together with next generation technology & design to enhance your experience.

Different by Design, each guestroom has an urban style and hip décor flushed with vibrant colors & views of Dubai.

Work, Play or Relax in our 230 guestrooms with airy 9-foot high ceilings, plush platform beds, fast & free WiFi, 55" LED TV's, Aloft signature coffee, custom Aloft bath amenities by Bliss® Spa, walk-in showers with rainfall showerheads and more.

What ever your preferences are we have what you are looking for right here at Aloft Dubai Airport!



GUESTROOMS & SUITES



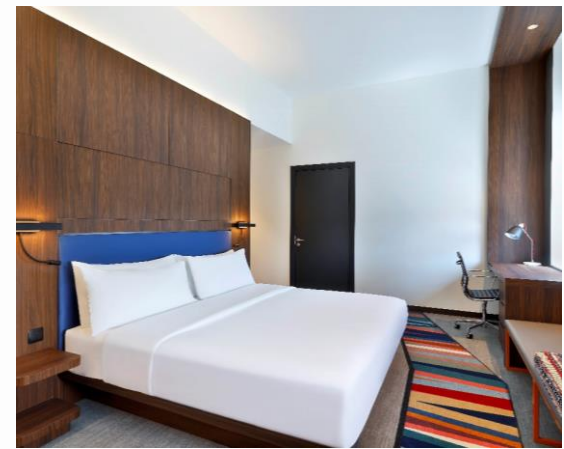
Aloft Room King/Twin



Savvy Room King/Twin



Aloft Suite's



Aloft Family Room

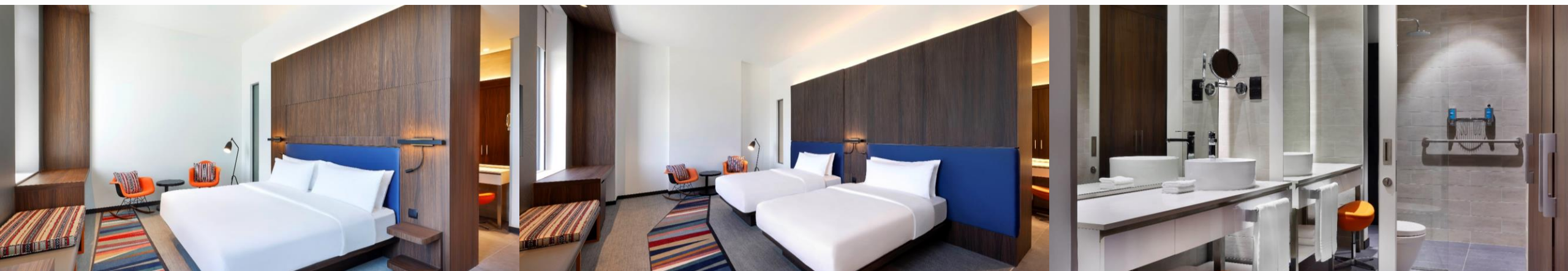
ALOFT ROOM KING/TWIN, CITY/COURTYARD VIEW

Inventory – King: 124 & Twin: 75

The Aloft room offer an urban décor with airy foot high ceilings. Seek utmost comfort on our plush King/Twin beds or rejuvenate after a long day under our walk-in rainfall showerheads. All Aloft rooms are extremely quiet with extravagant city views. Flushed with bright colors and spacious in size these rooms create a comfortable accommodation option for all.

Features & Amenities-

- | | | |
|------------------------------------|------------------------------|----------------------------|
| -33-36 Square Meters | -Plush King & Twin Bed | -2 Phones Available |
| -Coffee Machine | -City/Courtyard View | -55 Inch LED TV |
| -Walk In Shower/Bathtub Available | -Complimentary Bottled Water | -Cable/Satellite Available |
| -Max. Occupancy 2 Adults & 1 Child | -Iron & Ironing Board | |



SAVVY ROOM KING/TWIN, CITY VIEW

Inventory – King: 15 & Twin: 4

Revel in style & comfort in the 43-47 sqm Savvy room. The perfect blend of a business, leisure & playful experience, the Savvy room offers a vibrant city view paired with urban hip interiors showcasing Aloft's passion towards Work, Play & Relax! This room comes with a plush King/Twin bed, a walk-in shower with rainfall showerhead, amenities by Bliss® Spa and more. The Savvy room at Aloft Dubai Airport is also equipped with a living room.

Features & Amenities-

- | | | |
|-----------------------------------|------------------------------------|----------------------------|
| -43-47 Square Meters | -Plush King & Twin Bed | -2 Phones Available |
| -Tea/Coffee Machine | -City/Courtyard View | -55 Inch LED TV |
| -Walk In Shower/Bathtub Available | -Complimentary Bottled Water | -Cable/Satellite Available |
| -Iron & Ironing Board | -Max. Occupancy 2 Adults & 1 Child | -Living Room Available |



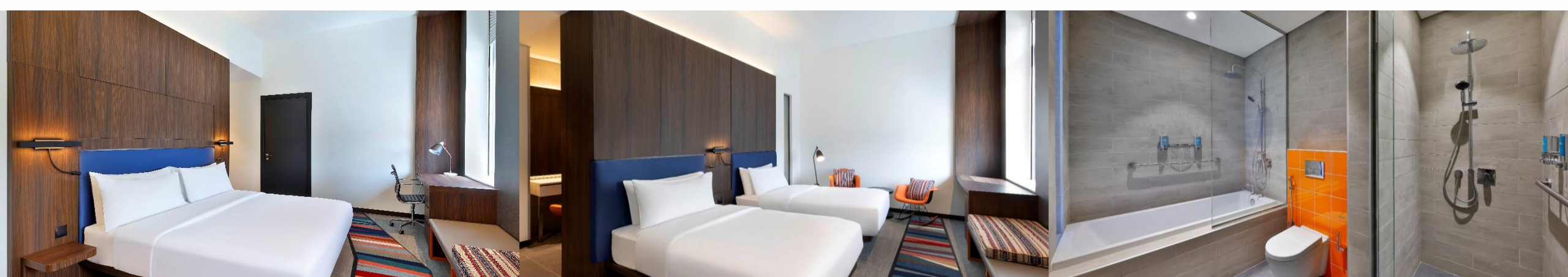
FAMILY ROOM, CITY/AIRPORT VIEW

Inventory– 36

Enjoy all things wonderful in the 66-72 sqm Aloft Family Suite. With all things fabulous from the Aloft Suite, the Family Suite offers added luxury of even more space, great views, a living room, two bedrooms, two and a half bathrooms and more! This suite offers a King and a Twin bedroom, the bathrooms are flushed with colors with a vanity mirror across the wall.

Features & Amenities-

- | | | |
|------------------------------------|------------------------------|----------------------------|
| -66-72 Square Meters | -Plush King & Twin Bed | -2 Phones Available |
| -Tea/Coffee Machine | -City View/Airport View | -55 Inch LED TV |
| -Walk In Shower/Bathtub Available | -Complimentary Bottled Water | -Cable/Satellite Available |
| -Max. Occupancy 4 Adults & 1 Child | -Iron & Ironing Board | |



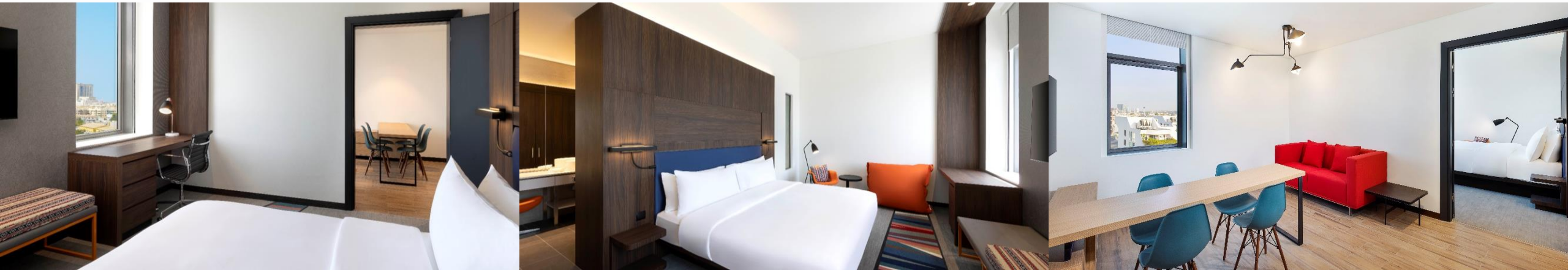
ALOFT ONE BEDROOM SUITE, CITY VIEW

Inventory– King: 12

Staying a bit longer or just like to spread out? Settle into our One Bedroom Aloft Suite, with all the fantastic features of Aloft rooms plus a living space for unwinding in style. The 53-57 sqm Aloft Suite offers a plush King bed, a stylish décor with views of Dubai, amenities by Bliss® Spa, a walk in shower, a bathtub and much more.

Features & Amenities-

- | | | |
|------------------------------------|----------------------------|-----------------------------------|
| -53-57 Square Meters | -Plush King & Twin Bed | -2 Phones Available |
| -Tea/Coffee Machine | -City View | -55 Inch LED TV |
| -Complimentary Bottled Water | -Cable/Satellite Available | -Walk In Shower/Bathtub Available |
| -Max. Occupancy 2 Adults & 1 Child | -Iron & Ironing Board | -Extra Bed Available |



ALOFT TWO BEDROOM SUITE, CITY VIEW

Inventory– 4

They say bigger is better and we agree, Laze back and relax in the airy Aloft Two Bedroom Suite with city views. Enjoy this urban space as your work, play or relax in the comfort your very own two bedroom suite that can accommodate up-to 5 people with ease.

Features & Amenities-

- | | | |
|------------------------------------|----------------------------|----------------------|
| -86-95 Square Meters | -Plush King & Twin Bed | -2 Phones Available |
| -Tea/Coffee Machine | -City View | -55 Inch LED TV |
| -Complimentary Bottled Water | -Cable/Satellite Available | -Extra Bed Available |
| -Max. Occupancy 4 Adults & 1 Child | -Iron & Ironing Board | |



W XYZ BAR & MUSIC

FOOD & BEVERAGE

At Aloft Dubai Airport it's as tuned in as the music and as cool as its urban vibe.

Catch live acoustic performances, mix, mingle and sip on your favorite beverages at the W XYZ Bar.

Known for its stylish urban vibe the W XYZ bar is the hottest spot in town for a great evening.

Thanks to its creative cocktail menu, top-branded beverages and great tunes, you've got a recipe for a really great night out.

Open Daily from 04:00 PM – 01:00 AM



BACKYARD

FOOD & BEVERAGE

Take the fun into the open at the Aloft Backyard! Flushed with colors and incredible graffiti the Aloft Backyard is a fantastic place to socialize, meet new people, grab your favorite drink, enjoy the Dubai breeze and have a great time out. Your favorite food and drinks from the W XYZ bar are also available at the Backyard.

Open Daily from 04:00 PM – 01:00 AM



ALOFT ALL DAY DINING

FOOD AND BEVERAGE

Start your day right with a hearty Aloft Breakfast at the All Day Dining restaurant - Runway

Stocked with an array of international delicacies Runway is the perfect culinary getaway to enjoy your favorite delicacies while you work or play.

Serving super-fresh delicacies in a friendly and laid-back setting, Runway is a great choice for breakfast, lunch and dinner.

Runway Open Daily from:

Breakfast- 06:30 AM – 10:30 AM

Lunch- 12:00 PM – 03:30 PM

Dinner- 07:00 PM – 11:00 PM

LIVE AT ALOFT DUBAI AIRPORT

LIVE PERFORMANCES

Fuel your passion for music and catch acoustic performances by emerging and local artists while you enjoy the vibrant social scene. Aloft Dubai Airport believes in music and live arts and will organize multiple live performances with influential local artists to bring the art of music to your ears.



RE:FUEL

PORTABLE BREAKFAST POTS & WRAPS

Perk up or chill out with grab-and-go food options at Re:Fuel, the 24/7 one-stop shop for snacks and bites at Aloft. Discover a menu of sweet, savory, fast and fresh options including salads, sandwiches and snacks. At Aloft our focus on the future extends to the food options we offer our guests. Our new Re:Fuel breakfast pots offer a fresh, flavorful option for guests looking to enjoy their meal in the hotel or on the fly.



ALOFT DECK & RE:CHARGE

ROOF TOP INFINITY POOL & GYM

Grab your swimwear, apply suntan and jump straight into the Aloft Deck, Dubai's most happening pool bar. Located on the rooftop is the Aloft Deck an infinity pool overlooking the picturesque Dubai skyline. Known for it's rooftop pool parties, the Aloft Deck is the place to be!

Re:Charge at the well-equipped fitness center at Aloft Dubai Airport. With all the fitness amenities you desire to maintain your wellness regimen during your travel, Re:Charge has top of the line equipment's for holistic, heart-racing workouts and more.



RE:MIX LOUNGE

ALOFT LOUNGE

Discover the free flow of modern living at Re:Mix. Large windows, an open layout, mood lighting, and music set the tone for an eclectic and electric destination, day and night. A social hub to hang out in. A playful place to work, relax—or just get away from the quiet of your room.

Sink into seating that's colorful and contemporary, but still comfy-cozy. Sidle up to the W XYZ bar for some drinks or pop into Re:Fuel for a self-serve snack. Catch up with friends, or catch the big game on the four-panel LCD TV screening wall. Bring your laptop and get some work done (or just surf)—the Wi-Fi is always on the house!

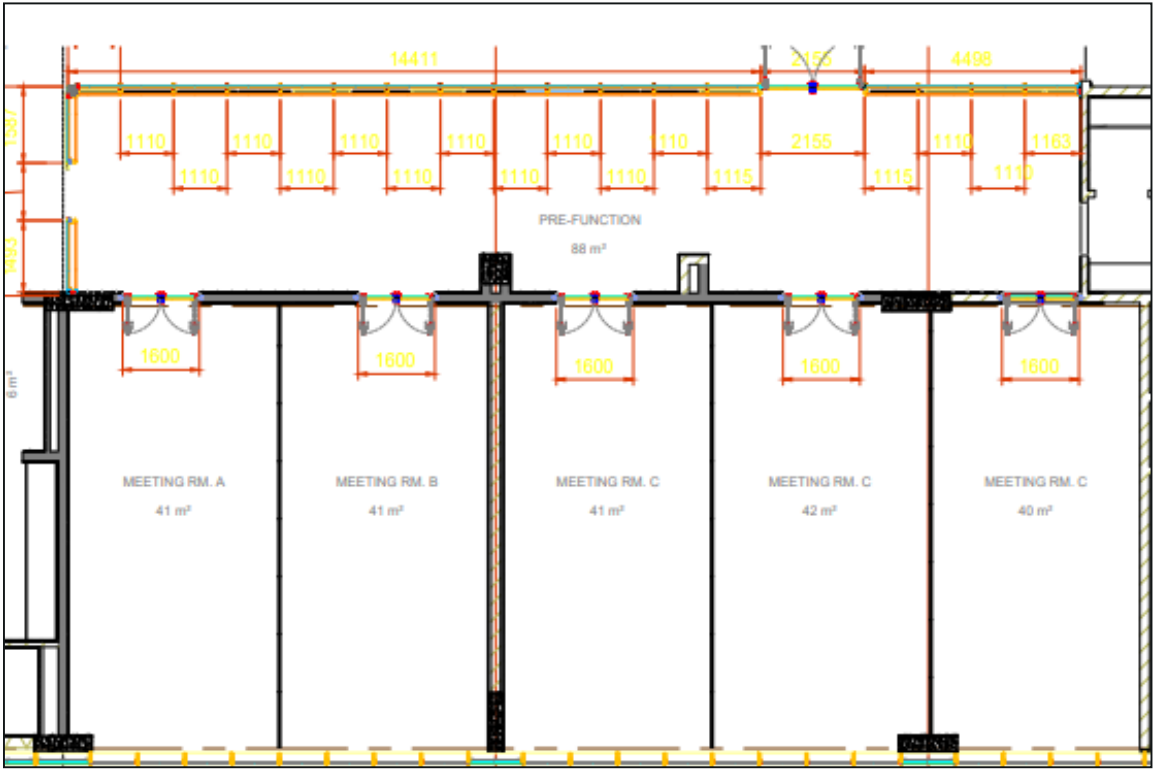
Treat yourself to a relaxing banter or bring a book to lounge quietly, how about battling it out over billiards or a board games with friends. Re:Mix is whatever you make it!



TACTIC MEETING ROOMS

ALOFT DUBAI AIRPORT MEETINGS

Dynamic & modern meeting venues that can accommodate over 100 invitees. Spark great ideas by planning your meetings in one of our four meeting rooms.



Meeting Rooms	Area (Sq.m)	Area (ft)	Length (m)	Length (ft)	Width (m)	Width (ft)	Height (m)
Tactic 1/2/3/4/5	40	430	9.48	102.04	4.30	46.2	3.49
Tactic 1-2/3-4/4-5	80	861.1	8.6	92.5	9.48	102.04	3.49
Tactic 3-5	120	1291.6	12.9	138.8	4	43.05	3.49



TACTIC MEETING ROOMS

ALOFT DUBAI AIRPORT MEETINGS



Capacity chart for the Tactical meeting rooms at Aloft Dubai Airport-

Meeting Rooms	Boardroom	U-Shape	Hollow Square	Classroom	Cabaret	Banquet Seated	Theater	Cocktail
Tactic 1/2/3/4/5	12	12	12	18	12	24	30	30
Tactic 1-2/2-3/3-4/4-5	30	30	34	42	54	60	80	70
Tactic 3-5	38	38	42	54	72	80	110	90

A man and a woman are running towards the right. The woman is in the foreground, wearing a dark top and pants, carrying a large suitcase. The man is behind her, wearing a dark shirt and pants, also carrying a suitcase. A large, solid magenta rectangle is overlaid on the image, partially obscuring the figures. The text "THANK YOU!" is centered over the rectangle.

THANK YOU!

For more information visit our website at <https://www.marriott.com/hotels/travel/dxbad-aloft-dubai-airport/>